

Seminar Dates

Philadelphia, PA – Thursday, April 2, 2009

Early Registration – March 15, 2009
Holiday Inn Stadium, Philadelphia, PA
https://www.regonline.com/63369_702307F

St. Louis, MO – Wednesday, May 6, 2009

Early Registration – April 15, 2009
Engineers Club, St. Louis, MO
https://www.regonline.com/63370_707486F

New York, NY – Tuesday, May 7

Early Registration – April 16
NYC Conference Center, NYC, NY
https://www.regonline.com/63370_707998F

Pittsburgh, PA – Tuesday, May 12

Early Registration – April 19
David Lawrence Convention Center, Pittsburgh, PA
https://www.regonline.com/63370_707999F

Boston, MA – Thursday, May 14

Early Registration – April 21
Radisson Hotel, Boston, MA
https://www.regonline.com/63370_708001F

Atlanta, GA – Thursday, May 21, 2009

Early Registration – April 29
Windy Hill Marriott, Atlanta, GA
https://www.regonline.com/63370_708002F

Dallas, TX – Thursday, May 28, 2009

Early Registration – May 5
DFW Marriott, Irving, TX
https://www.regonline.com/63370_708004F

Houston, TX – Friday, May 29, 2009

Early Registration – May 6
Westin Galleria, Houston, TX
https://www.regonline.com/63370_708005F

Kansas City, MO – Tuesday, June 2, 2009

Early Registration – May 11
Holiday Inn Hotel & Suites, Overland Park, KS
https://www.regonline.com/63370_708006F

Chicago, IL – Thursday, June 4, 2009

Early Registration – May 13
Palmer House, Chicago, IL
https://www.regonline.com/63370_708007F

Visit our website at www.us.hilti.com/education for more information.

Registration Fees

\$99 Early Registration Fee *

\$120 Full Registration Fee **

\$75 Student Registration Fee

\$35 Building Official Registration Fee

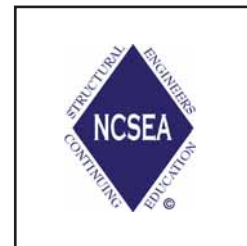
20% Discount – For 3 or more participants from the same design office registering together.

* Refer to seminar dates for early registration deadlines.

** Full registration fees apply to all registrations received after the early registration deadlines.

Continuing Education Credit

NCSEA Diamond Review recognized continuing education program for professional engineers worth 0.4 CEUs, 4.0 PDHs, also NY PIE approved



Recognized by
NCSEA Diamond Review

HILTI

Continuing
Education



Building Codes and Post-Installed Anchors - Strength Design

Hilti. Outperform. Outlast.

Recognized by
NCSEA Diamond Review



Strength Design Method for Post-Installed Anchoring Systems

Learn about the significant changes to the design approach of cast-in and post-installed concrete anchoring systems in the 2005 edition of the ACI 318 Building Code, Appendix D and the 2003 and 2006 International Building Codes.

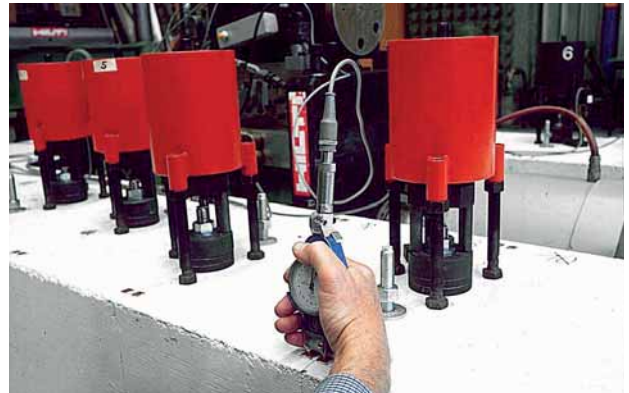
Hilti is proud to present a continuing education seminar that has received NCSEA's Diamond Review and is recognized as providing information that is meaningful and useful to Structural Engineers. The 4-hour seminar will provide a detailed analysis and explanation of ACI 318-05, Appendix D – *Anchoring To Concrete*, ICC-ES Acceptance Criteria AC193 for mechanical, and ICC-ES Acceptance Criteria AC308 for adhesive anchors.

Seminar focus is the design of post-installed anchoring systems for the 2003 and 2006 International Building Code using the provisions of ACI 318 Appendix D, including a review of the acceptance criteria associated with pre-qualification of post-installed anchors (ACI 355.2, ICC-ES AC193 and AC308) and how to utilize the provisions of ACI 318-D for post-installed anchoring system design.

In addition, post-installed anchors that have been qualified for use with the provisions of ACI 318-D will be introduced. Design examples using these anchoring systems will be presented and design problems will be worked using the new Hilti PROFIS Anchor Design Software. The seminar will conclude with discussions of how to specify post-installed mechanical and adhesive anchors, onsite training program overview and inspection requirements.

Program Goals

- Educate Structural Engineers on post-installed anchor design using Strength Design.
- Educate Structural Engineers on the provisions of ACI 318-05, Appendix D and their use for designing concrete anchoring systems.
- Provide examples for the design and specification of post-installed anchoring systems that have been qualified under ACI 355.2, ICC-ES AC193 and AC308 and discuss post-installed anchoring systems that have been approved by ICC Evaluation Services for use with the 2003 and 2006 IBC.
- Introduce PROFIS as a software tool for the design of post-installed anchoring system using the provisions of ACI 318, Appendix D.



Hilti offers outperforming and outlasting fastening solutions. Setting the standard in post-installed anchoring system technology, through sophisticated research, development and manufacturing.



Browse Hilti anchoring systems by base material and type, download CAD details or look for the latest ICC-ES reports. All online. All at www.us.hilti.com.

For more information please visit our Continuing Education Website at www.us.hilti.com/education.

Hilti. Outperform. Outlast.

Seminar Topics

- Detailed analysis and explanation of ACI 318-05, Appendix D, AC193 and AC308:
 - History of design approach
 - General requirements
 - Tension design
 - Shear design
 - Design conditions and categories
 - Spacing, edge distance, and base material thickness restrictions and modifications
- Seismic design requirements
- Influence of cracked concrete
- Modification factors for tension and shear
- Eccentricity in anchor groups
- PROFIS Anchor Design Software utilizing Strength Design
- Product evaluation reports
- Specification and installation of Post-Installed Anchoring Systems.

Instructors

Hilti Continuing Education Directors

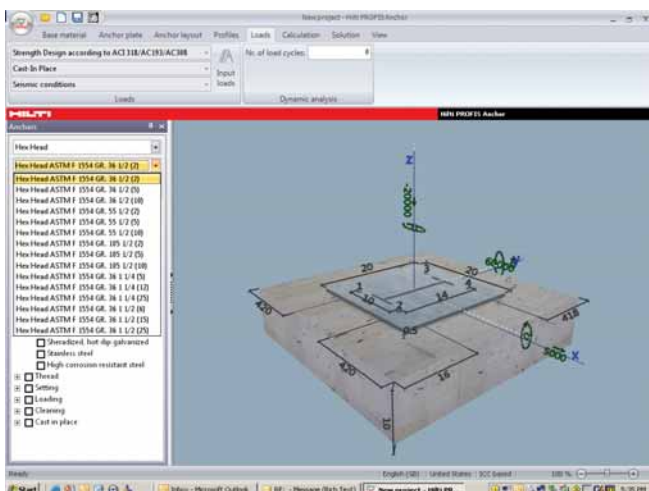
The Hilti Continuing Education Faculty has studied under the direction of two leading industry experts in concrete anchorage: John F. Silva, S.E., and Richard Wollmershauser, PE, FACI. Both John and Richard have specific expertise in the Strength Design Method and have contributed to the development of ACI 318, Appendix D, ACI 355.2, ICC-ES AC193 and ICC-ES AC308.

Hilti Continuing Education Faculty

Brian Clark, PE	Peter Grzesik	Tim Nordstrom, PE
Joe Cortese, E. I. T.	John Farmer, PE	Michele Selvaggio, PE
Robert Dettman, PE	Richard Morgan, PE	Vince Smith, PE
Scot Gilb, PE	Laura Morillo, PE	

For more information about our faculty including detailed bios, please visit our Continuing Education Website at www.us.hilti.com/education.

NOTE: If it becomes necessary to substitute an instructor, an individual with similar qualifications will be used.



Hilti PROFIS Anchor is the most comprehensive anchor design software available. It's a 3D anchoring system design world on your desktop and a database packed with Hilti anchoring expertise.

As part of your registration, you will receive:

- Complete copy of seminar lecture notes.
- Full copy of the post-installed anchor design guide "Anchorage in Concrete Using Strength Design," a step-by-step manual covering key aspects of strength design for post-installed anchors with commentary.
- Design problem booklet with solutions, containing several examples of common applications of the Strength Design Method detailed in ACI 318-05, Appendix D, AC193 and AC308.
- A copy of the latest version of Hilti PROFIS Anchor Design Software, the most up-to-date design program for concrete anchor design incorporating both strength design and allowable stress solvers.
- Current design data for ACI 355.2, ICC-ES, AC193 and AC308 approved post-installed anchoring systems, including ICC-ES reports compliant with the 2003 and 2006 IBC and design handouts.
- Note taking materials.
- Lunch and beverages during breaks.

What you need to bring:

- A copy of ACI 318-05 will be useful, but not mandatory.
- Current form of identification.
- Check or credit card to cover registration cost if not previously mailed in.

Seminar agenda:

7:00 am	Registration
8:00 am	Seminar begins
12:00 pm	Lunch
1:00 pm	Seminar ends

Hilti. Outperform. Outlast.